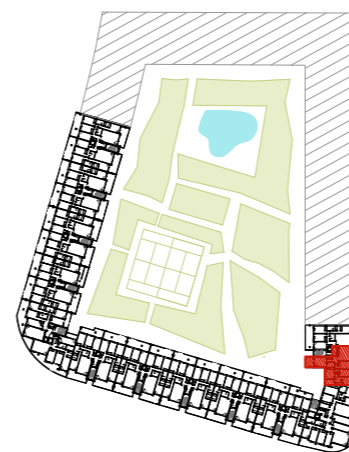


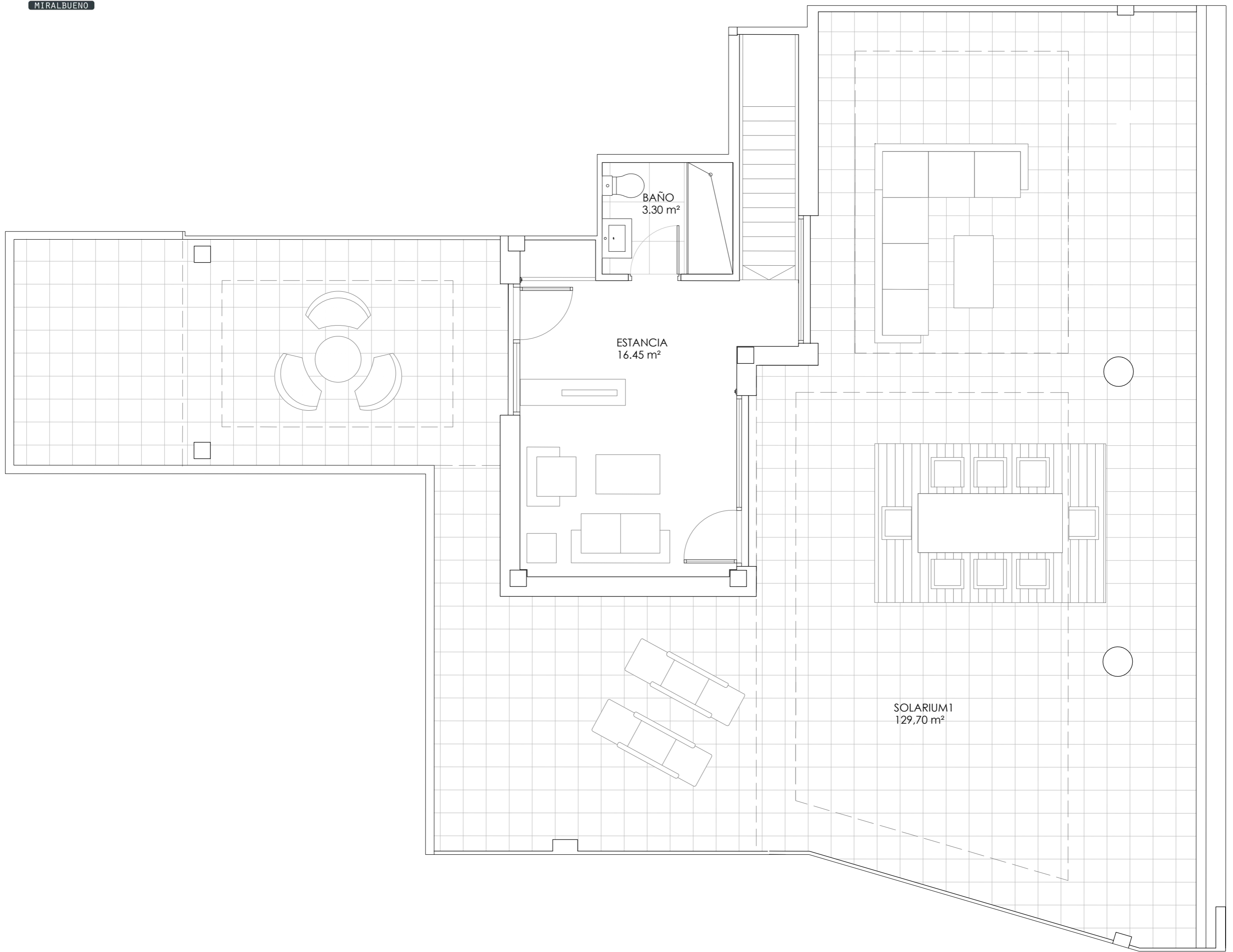


RESIDENCIAL BASA DE LA MORA

E1 7º A

SUPERFICIES ÚTILES		
CERRADA	TERRAZAS	TOTAL
127.55 m ²	38.25 m ²	165.80 m ²
SOLARIUM		
129.70 m ²		





RESIDENCIAL BASA DE LA MORA

E1 7ºA ATICO

SUPERFICIES ÚTILES		
CERRADA	TERRAZAS	TOTAL
127.55 m ²	38.25 m ²	165.80 m ²
SOLARIUM		
129.70 m ²		

